

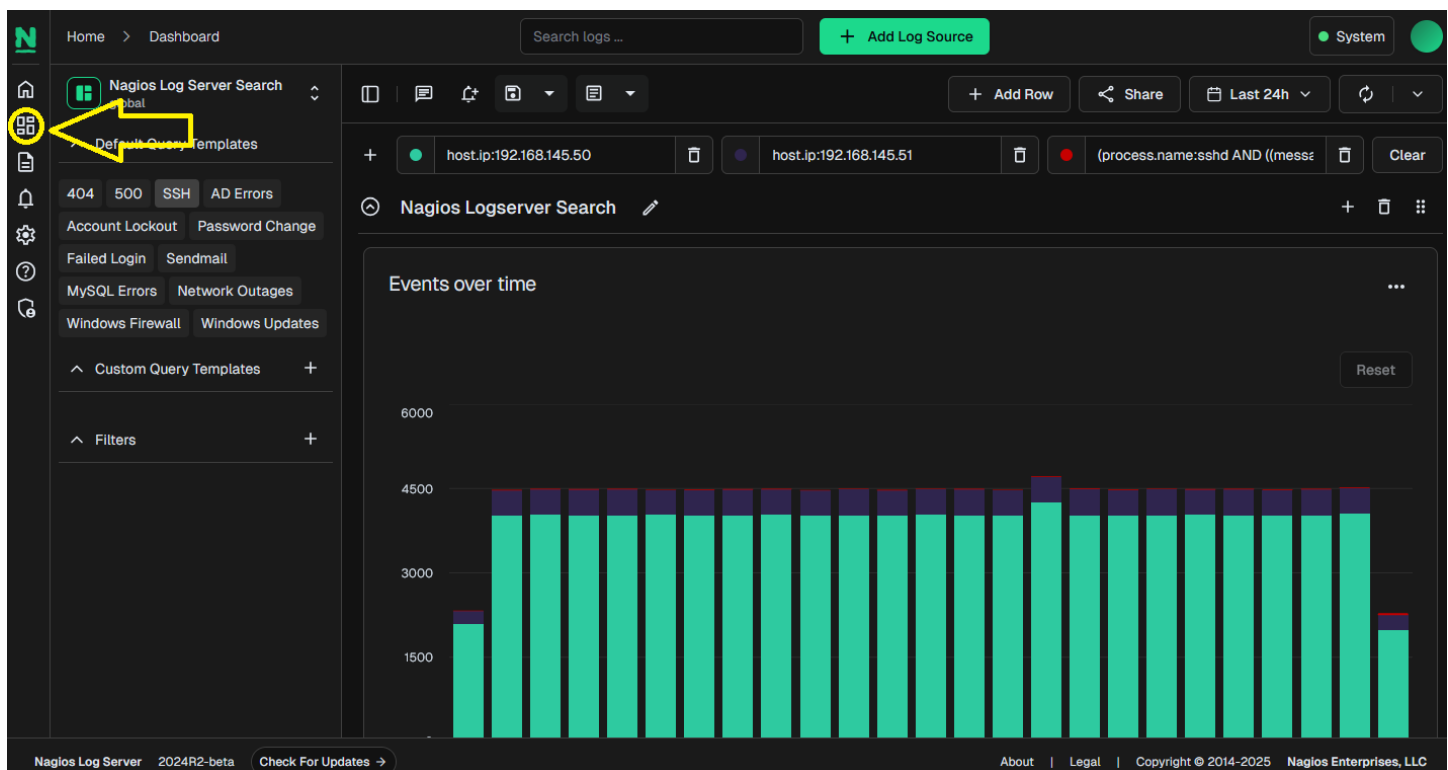
Managing Queries in Nagios Log Server 2024R2

Purpose

This document is designed to help you understand how to manage Queries in Nagios Log Server 2024R2. Queries and Filters enable you to narrow down collected data to view only specific subsets of particular interest. Queries are also used to determine the types of log event your [Alerts](#) should look for.

Navigation

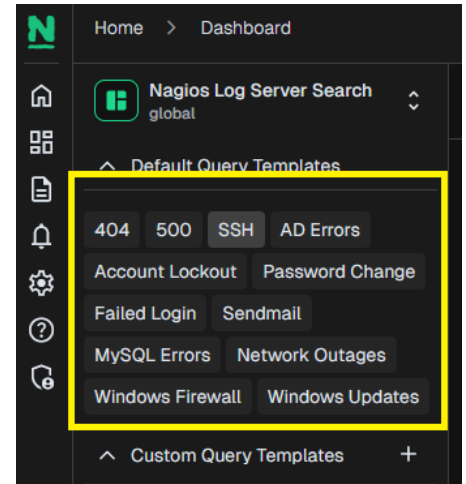
To access Queries, navigate to the Dashboards page:



Managing Queries in Nagios Log Server 2024R2

Default Queries (Easy Buttons)

On the Dashboards page, there are several default queries available to use. Selecting one or more of these queries will fill out the default dashboard with the selected data.



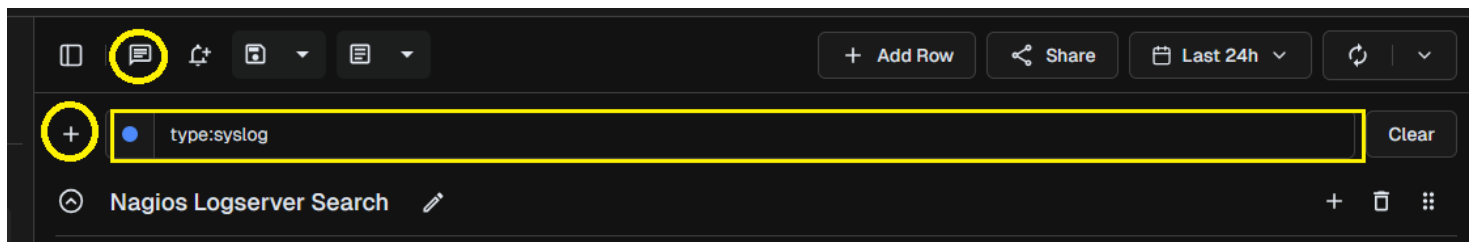
- **404** - Display logs that report 404 errors from both Apache and IIS sources.
- **500** – Filter logs that indicate server errors ranging from 500 to 505, for both Apache and IIS servers.
- **Failed Login** - Retrieve logs related to failed login attempts on Windows systems.
- **AD Errors** - Show logs that indicate specific error events from Active Directory, such as replication and DNS issues.
- **Sendmail** - Display logs associated with the sendmail service, including failed deliveries and authentication warnings.
- **SSH** - Filter logs that indicate SSH connection attempts, failed login attempts, errors, timeouts, and other related activities.
- **Account Lockout** - Retrieve logs about accounts being locked out due to multiple failed login attempts or other security reasons.
- **Password Change** - Show logs where account passwords have been changed or reset.
- **MySQL Errors**- Filter logs related to MySQL database errors, such as access denials, syntax errors, and connection issues.
- **Windows Firewall** - Display logs pertaining to the Windows Firewall, capturing both allowed and blocked events.
- **Network Outages** - Filter logs indicating network outages, failures, and disconnections.
- **Windows Updates** - Retrieve logs related to Windows Update events, both successful and unsuccessful.

After selecting one or more of these preset queries, you can add to or edit the query. See the following section to create your own queries.

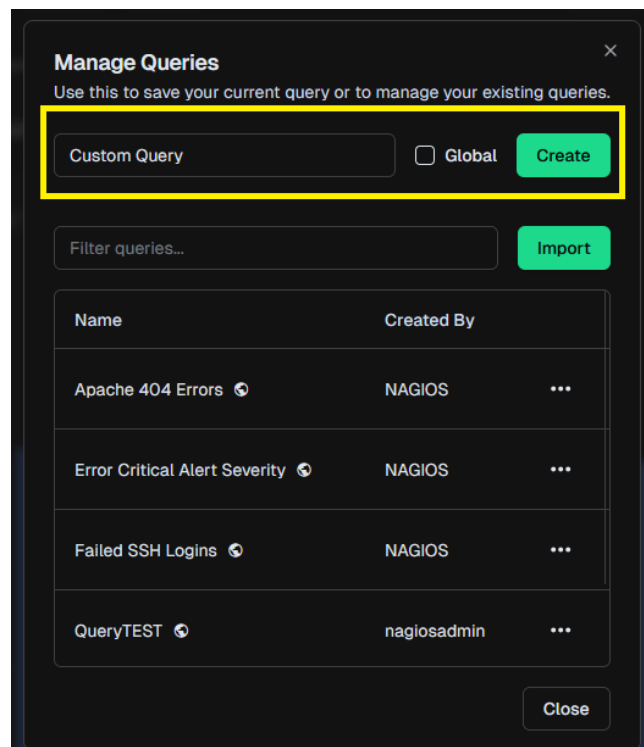
Managing Queries in Nagios Log Server 2024R2

Creating your own Queries

1. To create your own queries, use the empty query text box toward the top of your Dashboard:
2. Enter your query text, then press **Enter** to see the results displayed in the dashboard.
3. You can add more elements to your query by selecting the '+' button to add more inclusive queries.



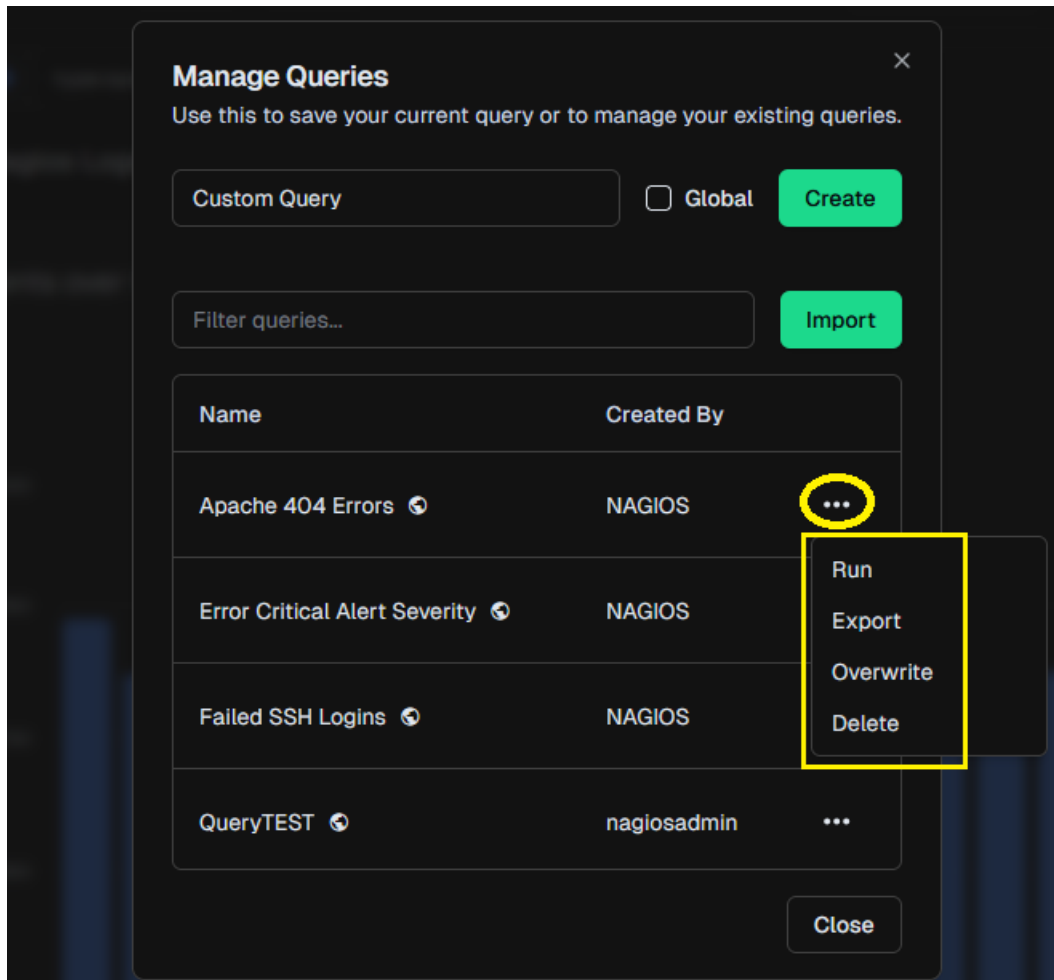
4. Save the new query by selecting the **Manage Queries** button in the top button navigation
5. Enter a name for your query.
6. Choose whether the query should be **Global** (visible to all other Users).
7. Select **Create**.



Managing Queries in Nagios Log Server 2024R2

Managing Queries

There are several functions you can perform on your queries on the Manage Queries popup. Access this by clicking the Manage Queries button at the top of Dashboards, then click the Actions icon:



- **Import** - You can import an existing query file by selecting Import.
- **Export** - You can download a query definition file to your local device by selecting Export on an existing query.
- **Overwrite** - You can overwrite an existing query definition with the currently defined query by selecting Overwrite.
- **Delete** - Delete an existing query.

Managing Queries in Nagios Log Server 2024R2

Artificial Intelligence Queries

Log Server also has the ability to integrate with OpenAI, Mistral, and Anthropic for [AI query generation](#), as well as a [self-hosted option](#) using the Nagios Enterprises' Large Language Models on vLLM.

Additional Resources

Analyzing Logs

To learn more about composing Queries and Filters to drill down to exact information, the [Analyzing Logs With Nagios Log Server](#) document is a great resources.

Alerting on Log Events

To learn more about leveraging your Queries in alerts, please refer to [Alerting On Log Events With Nagios Log Server](#).

Finishing Up

This completes the documentation on Managing Queries in Nagios Log Server 2024R2. If you have additional questions or other support-related questions, please visit us at our Nagios Support Forum, Nagios Knowledge Base, or Nagios Library:

[Visit Nagios Support Forum](#)

[Visit Nagios Knowledge Base](#)

[Visit Nagios Library](#)