

How To Integrate Google Map In Nagios XI 5

Purpose

This document describes how to download, install, and set up the Google Map integration component for Nagios XI.

Note: Google Map integration with Nagios XI is no longer supported. You can now use the World Map feature in Nagios XI to integrate geo mapping with your Nagios XI objects. Please see [Using the Nagios XI World Map](#) for more information.

Google API

To use the Google Map component you are required to have a billing account setup with Google. Don't be alarmed though, you can still access the maps for free when you have less than 25,000 page loads per day.

However, you do require a billing account to be created. Full details can be found at this link: <https://developers.google.com/maps/documentation/javascript/get-api-key#key>

Once you have enabled billing you will need to navigate to the Credentials section and create an API Key credential for Google Maps JavaScript access. You will need this key after you install the component in the next step.

Downloading and Installing

The Google Map component for Nagios XI can be obtained from Nagios Exchange at the following URL:

<https://exchange.nagios.org/directory/Addons/Components/Nagios-XI-Google-Map-Integration-Component/details>

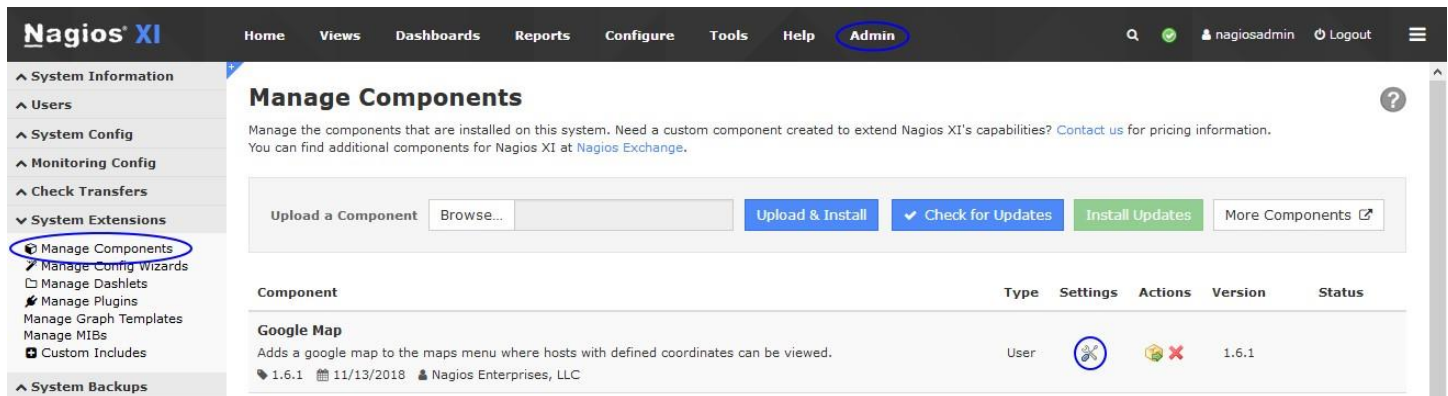
Download the zip file and then navigate to **Admin > System Extensions > Manage Components**. Use the **Browse** and **Upload & Install** buttons to install the `googlemap.zip` component into Nagios XI.

Once you have installed the component, on the same page click the Check for Updates button.


How To Integrate Google Map In Nagios XI 5

Add Google API Key

While on the **Manage Components** page locate the Google Map component and click the **Settings** icon.



The screenshot shows the Nagios XI interface. The top navigation bar includes links for Home, Views, Dashboards, Reports, Configure, Tools, Help, and Admin (circled in blue). The left sidebar lists various system management options, with 'Manage Components' under 'System Extensions' circled in blue. The main content area is titled 'Manage Components' and contains a table of installed components. The table has columns for Component, Type, Settings, Actions, Version, and Status. One component, 'Google Map', is listed with a 'User' type and a settings icon in the Actions column.

Component	Type	Settings	Actions	Version	Status
Google Map Adds a google map to the maps menu where hosts with defined coordinates can be viewed. 1.6.1 11/13/2018 Nagios Enterprises, LLC	User			1.6.1	

This will bring up the Google Map settings page. Here you can populate the **API Key** field using the key you obtained earlier.

Click the **Apply Settings** button when you have performed this step.

Google Map

Google Maps Settings

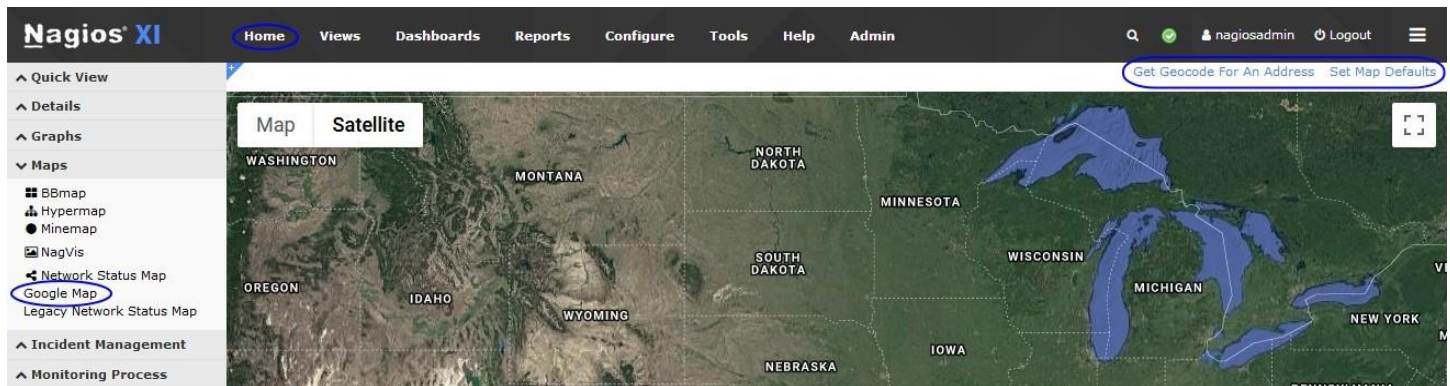
API Key:

Your Google maps API key.

How To Integrate Google Map In Nagios XI 5

Open Google Maps Component

Once the component is installed and the API key has been added, navigate to **Home > Maps > Google Map**.



If you are presented with a white screen, follow the steps in the next section Setting Map Defaults.

Setting Map Defaults

The default Google map will display a zoomed out image of earth. In order to set a default zoom level and location, click the **Set Map Defaults** link located on the upper right of the frame. You will need to supply:

Center latitude and longitude co-ordinates

- See the next section to get a set of co-ordinates

Default zoom level

- Numbers 7 – 20 are suggested to be used

Refresh Rate

- How often the map should refresh

Host to Parent Line Color

- You can set the color for host-parent lines using a standard color hex code. Search the internet and you'll find color hex code tools to give you the hex code for the color you require.

Please set your default coordinates and zoom level.

Default Center Coordinates: (Latitude/Longitude)

Default Zoom Level: (Recommended 7-20)

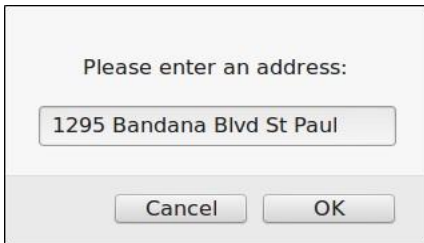
Refresh Rate: (in seconds)

Host to Parent Line Color:

How To Integrate Google Map In Nagios XI 5

Get Geocode For An Address

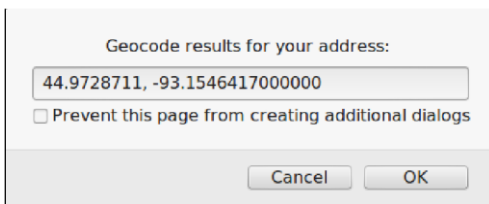
The easiest way to get a valid set of latitude and longitude co-ordinates for Nagios XI is to use the **Get Geocode For An Address** link, which utilizes Google's geocoding services. This will allow you to enter a city, state, zip code, or mailing address.



Please enter an address:

Cancel OK

When you click **OK** it will return a valid set of latitude and longitude coordinates that can be used as the default map coordinates, or the host location.



Geocode results for your address:

Prevent this page from creating additional dialogs

Cancel OK

Configure Hosts

To configure google map to display a marker bubble indicating a host's status you will need to add the latitude and longitude co-ordinates to the note's directive in the host object. Navigate to **Configure > Core Config Manager > Hosts** to bring up the Host Management page.

How To Integrate Google Map In Nagios XI 5

Click the host you want to **Modify** then click the **Misc Settings** tab.

Enter a valid set of latitude and longitude co-ordinates into the **Notes** field and then click **Save** when done.

Repeat these steps for any additional hosts.

Click **Apply Configuration** when done.

Host Management

Common Settings | Check Settings | Alert Settings | **Misc Settings**

Notes 44.9728711, -93.1546417000000	2D coords x,y
VRML image 	3D coords x,y,z
Notes URL 	Manage Free Variables
Status image 	Use this configuration as a template
Action URL 	Generic name
Icon image 	
Icon image 'alt' text 	

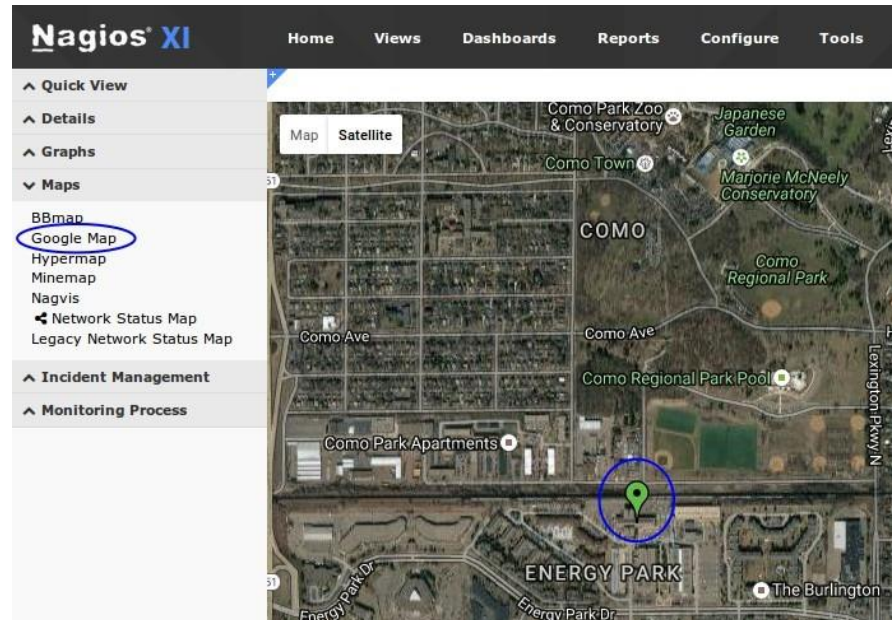
[Save](#) [Cancel](#)

How To Integrate Google Map In Nagios XI 5

View Map

Now that you have configured hosts with latitude and longitude co-ordinates they will appear on the Google Map.

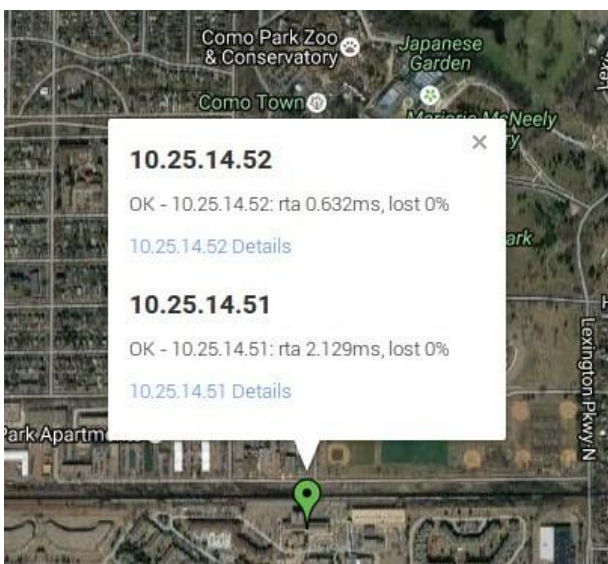
The Google Map component will only display hosts that have valid latitude and longitude co-ordinates in the Notes directive. If other entries are made into the notes field for a host, these hosts will be ignored by this component.



If multiple hosts have the same co-ordinates, they will appear on the map as one pin.

When you hover over the pin with the mouse, the names of the hosts at this location will be shown in a message bubble.

To view more details about these hosts, simply click on the pin.



How To Integrate Google Map In Nagios XI 5

At the bottom of the map you will also see two drop down lists, **Hosts:** and **Hostgroup:**. These options allow you to only show a specific host or all the hosts in a hostgroup on the map.



Note: Only hosts with configured co-ordinates will be shown in the Host: or Hostgroup: lists.

Additionally, there is a check box **Hide Parent/Child Lines** at the bottom of the map.

If you have parent/child relationships defined on your host objects, lines that reflect these relationships will automatically be displayed.

If you do not want these lines displayed, check the box **Hide Parent/Child Lines** at the bottom of the map.



Google Map Dashlet

The Google Map integration tool can also be accessed as a dashlet by downloading and installing the Google Map Nagios XI dashlet from the Nagios Exchange website.

<https://exchange.nagios.org/directory/Addons/Dashlets/Google-Map-Nagios-XI-Dashlet/details>

See the Nagios XI documentation for full instructions on installing and adding dashlets.

[Installing XI Dashlets](#)

How To Integrate Google Map In Nagios XI 5

Troubleshooting

When you first navigate to **Home > Maps > Google Map** all you can see is a white screen.

To resolve this problem, follow the steps under **Setting Map Defaults**.

When you navigate to **Home > Maps > Google Map** you receive the message:

```
Oops! Something went wrong. This page didn't load Google Maps correctly. See the JavaScript console for technical details.
```

This problem usually occurs when the google API key has not been correctly added or it has expired. Please check the steps under [Google API](#) and [Add Google API Key](#).

Finishing Up

This completes the documentation on how to integrate Google Map in Nagios XI. If you have additional questions or other support-related questions, please visit us at our Nagios Support Forum, Nagios Knowledge Base, or Nagios Library:

[Visit Nagios Support Forum](#)

[Visit Nagios Knowledge Base](#)

[Visit Nagios Library](#)