

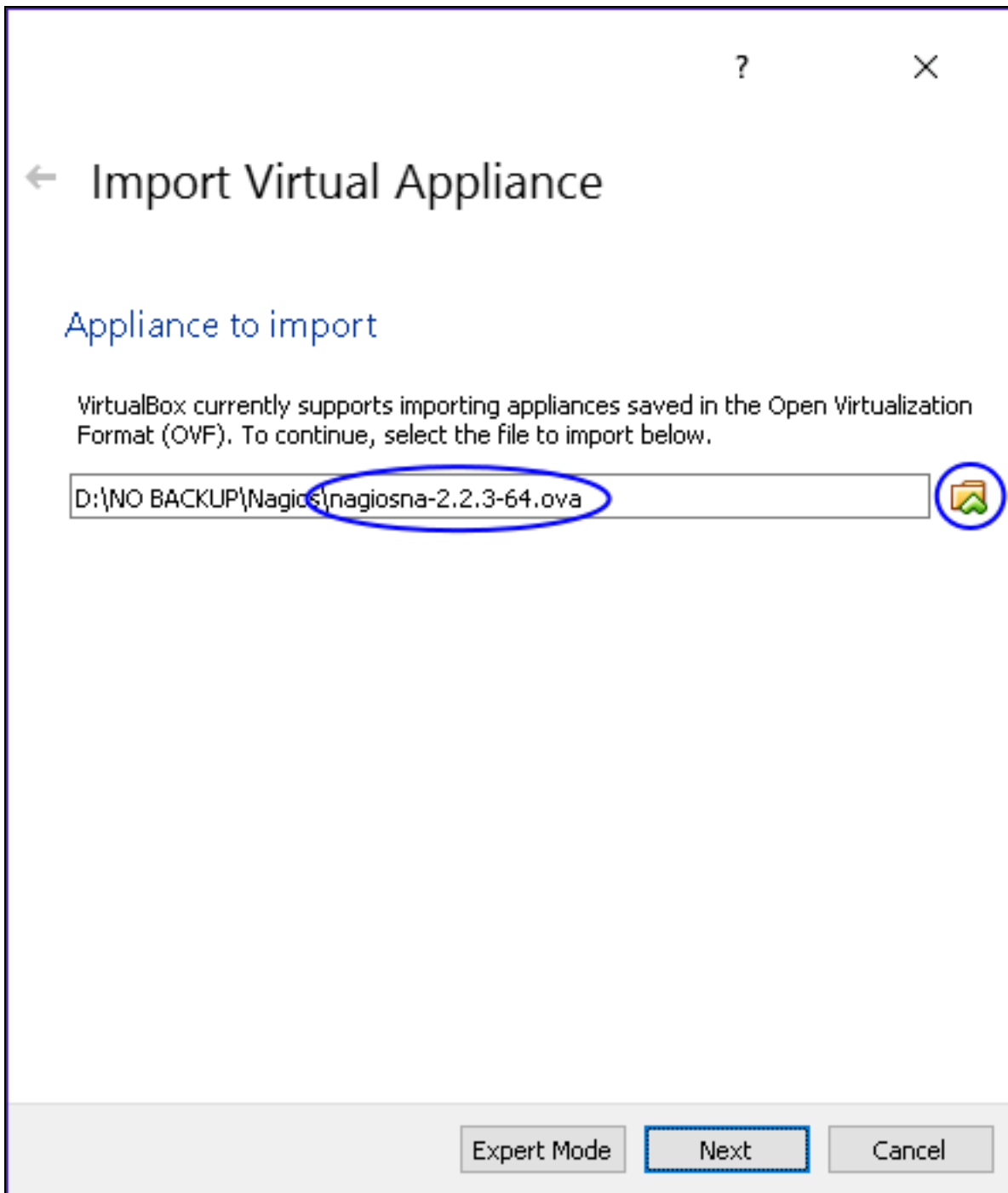
Nagios Network Analyzer 2024 Conversion for VirtualBox

Prerequisites

These instructions assume that you have the following already:

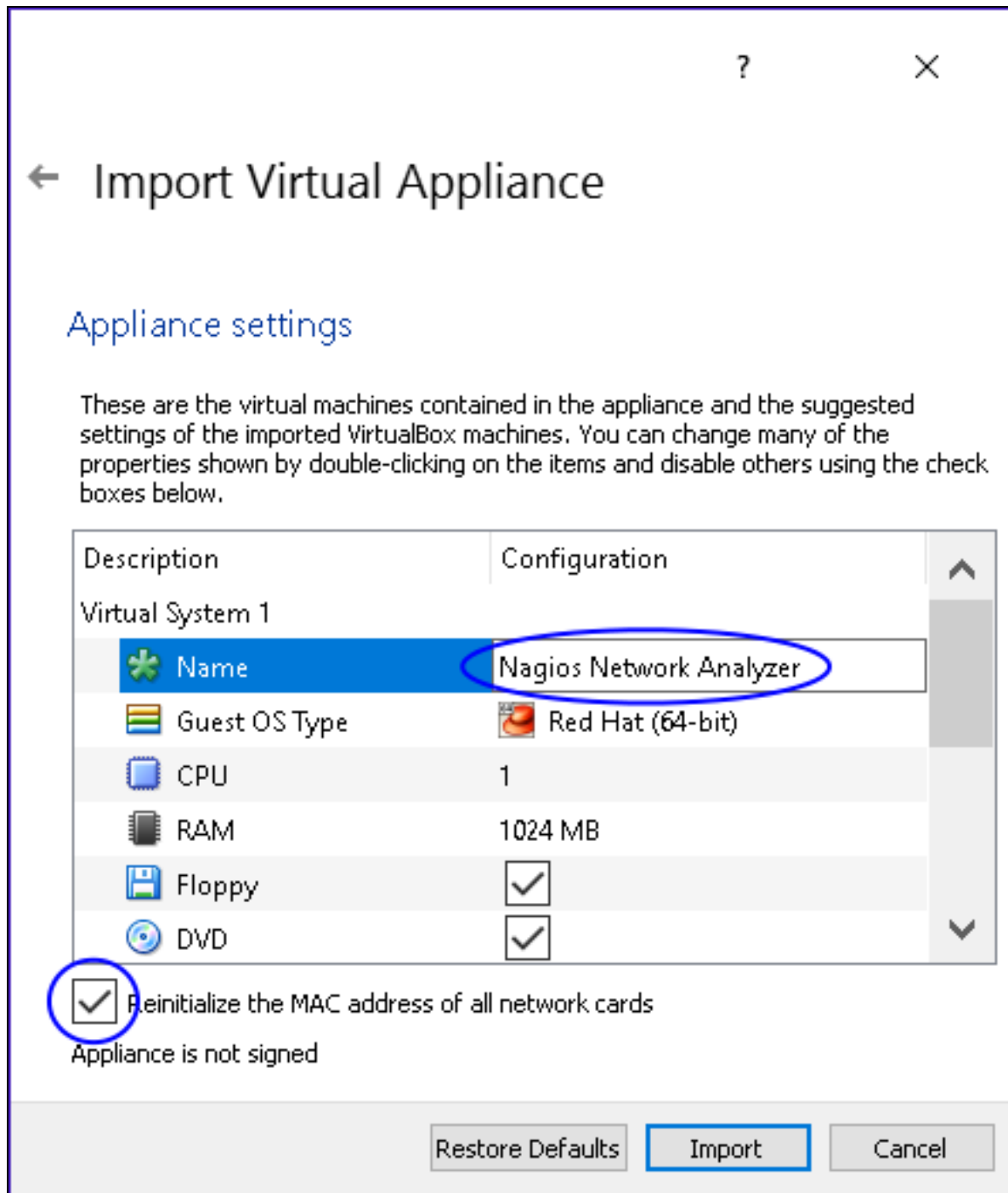
- VirtualBox installed
- The VMware OVA image of Nagios Network Analyzer, this can be downloaded from:
 - <https://www.nagios.com/downloads/nagios-network-analyzer/>

This guide is using VirtualBox installed on Microsoft Windows. The VirtualBox application works almost identically on Linux and these steps should be very similar and provide the same result.



Import The OVA

1. Open the Oracle VM VirtualBox Manager application and from the File menu select Import Appliance.
2. Use the folder icon to locate the Nagios Network Analyzer OVA file that you downloaded.
3. Click the Next button to proceed to the next step.

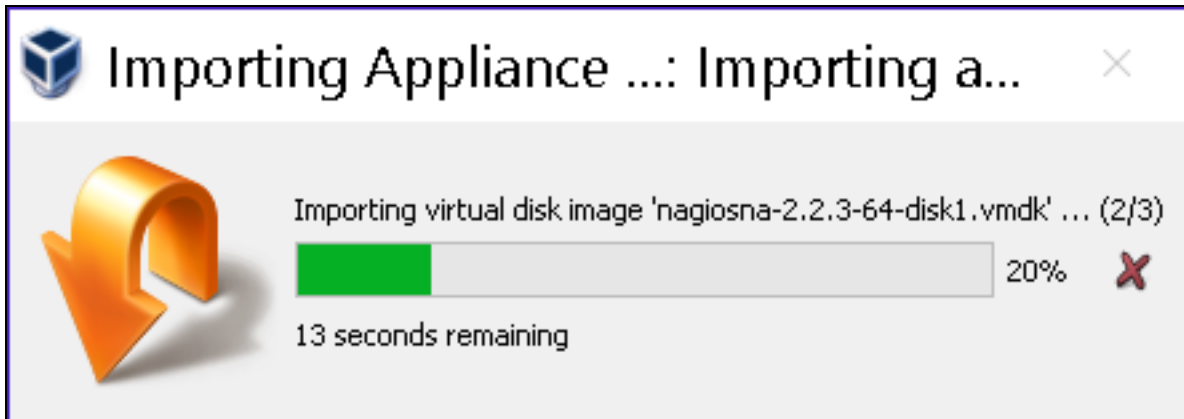


4. On the Appliance settings page you need to make two changes:

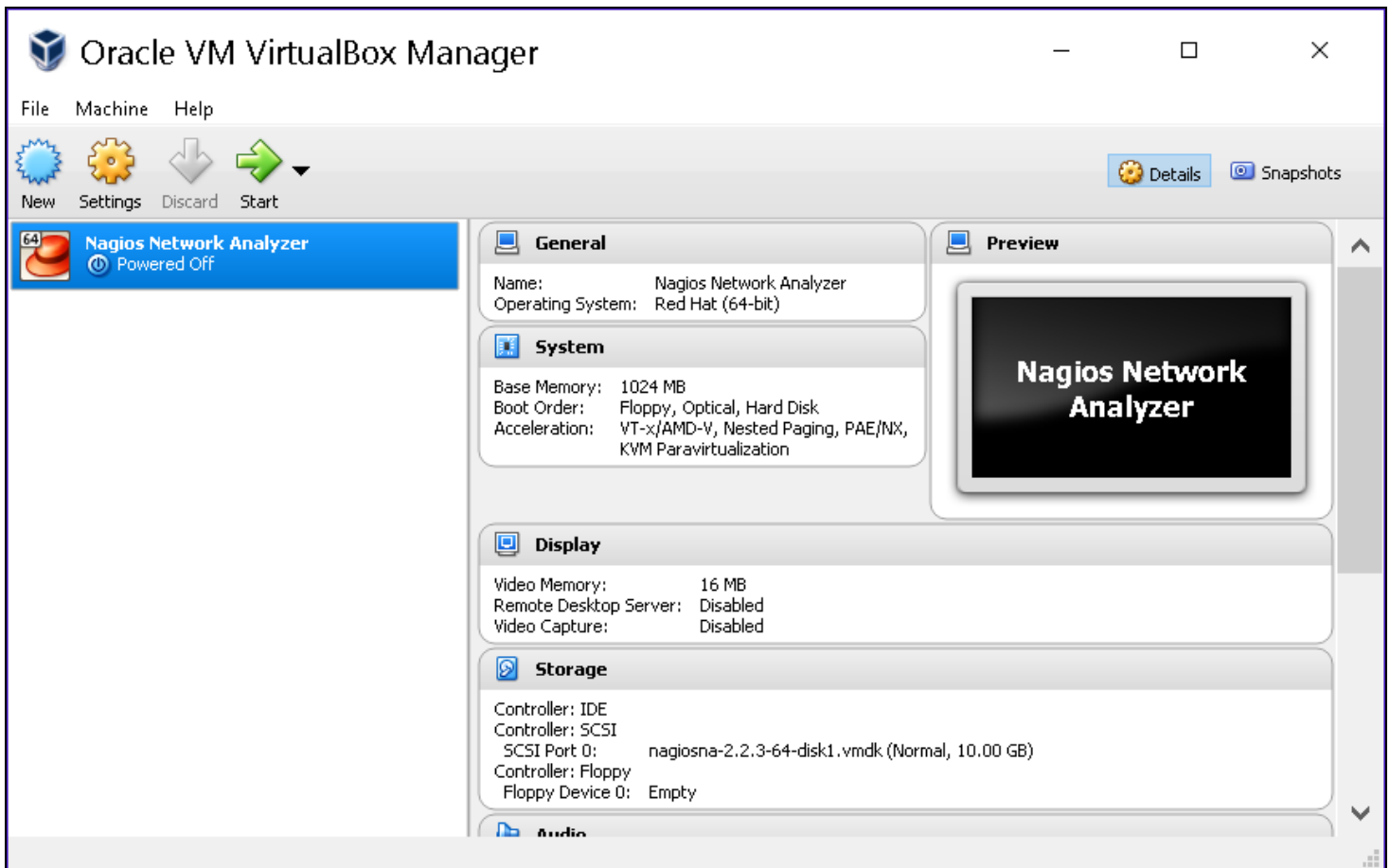
- Define a name for the VM (the default is "vm")
- Check the box Reinitialize the MAC address of all network cards

You can adjust the other settings such as CPU and RAM, however the minimum provided settings are adequate at this point.

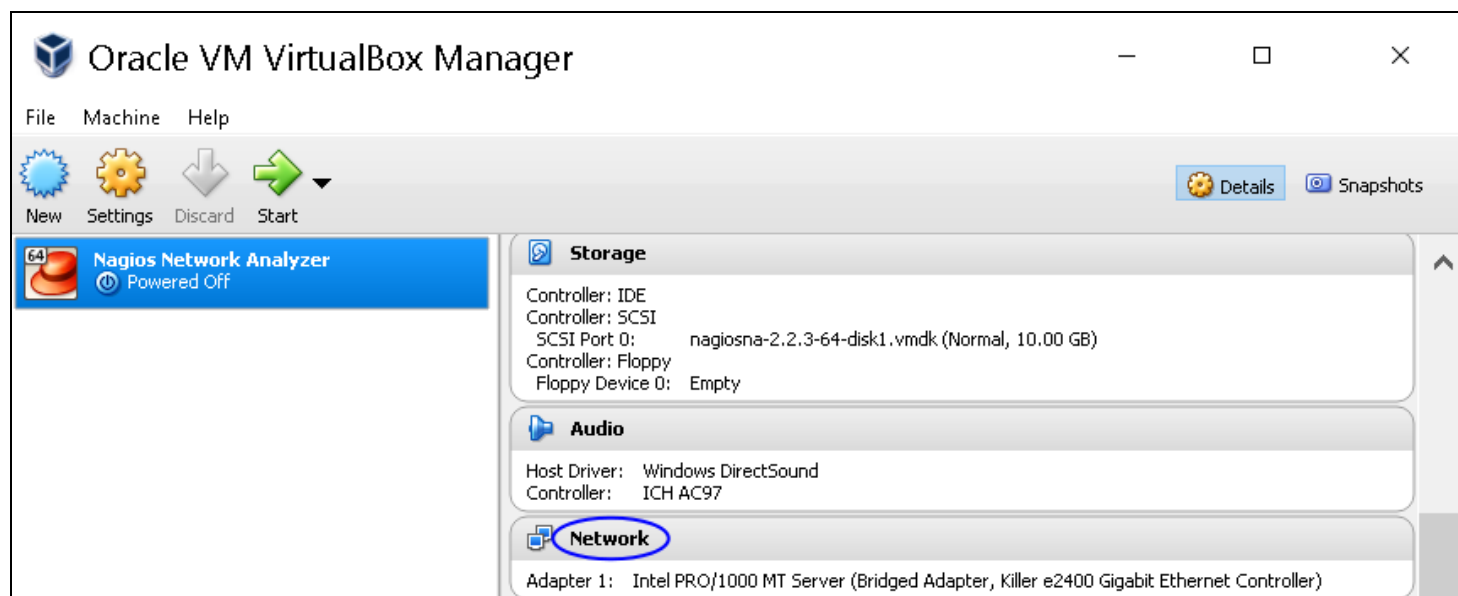
5. Click the Import button to create the virtual machine.



6. Wait while the OVA is imported.

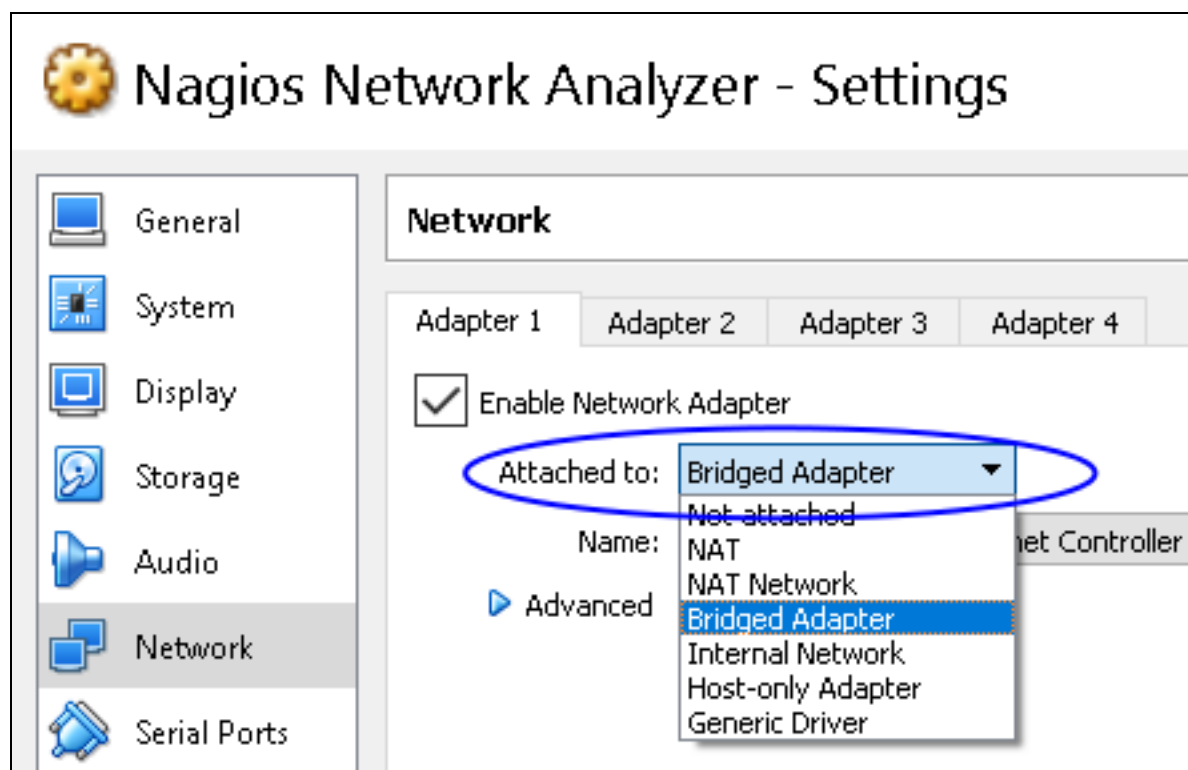


Once the import has completed you'll have the Nagios Network Analyzer VM in VirtualBox.



The only remaining step is to confirm the network configuration of the virtual machine.

7. After clicking on the Nagios Network Analyzer VM in the left pane of VirtualBox, in the right pane scroll down to Network and then click on the word Network.

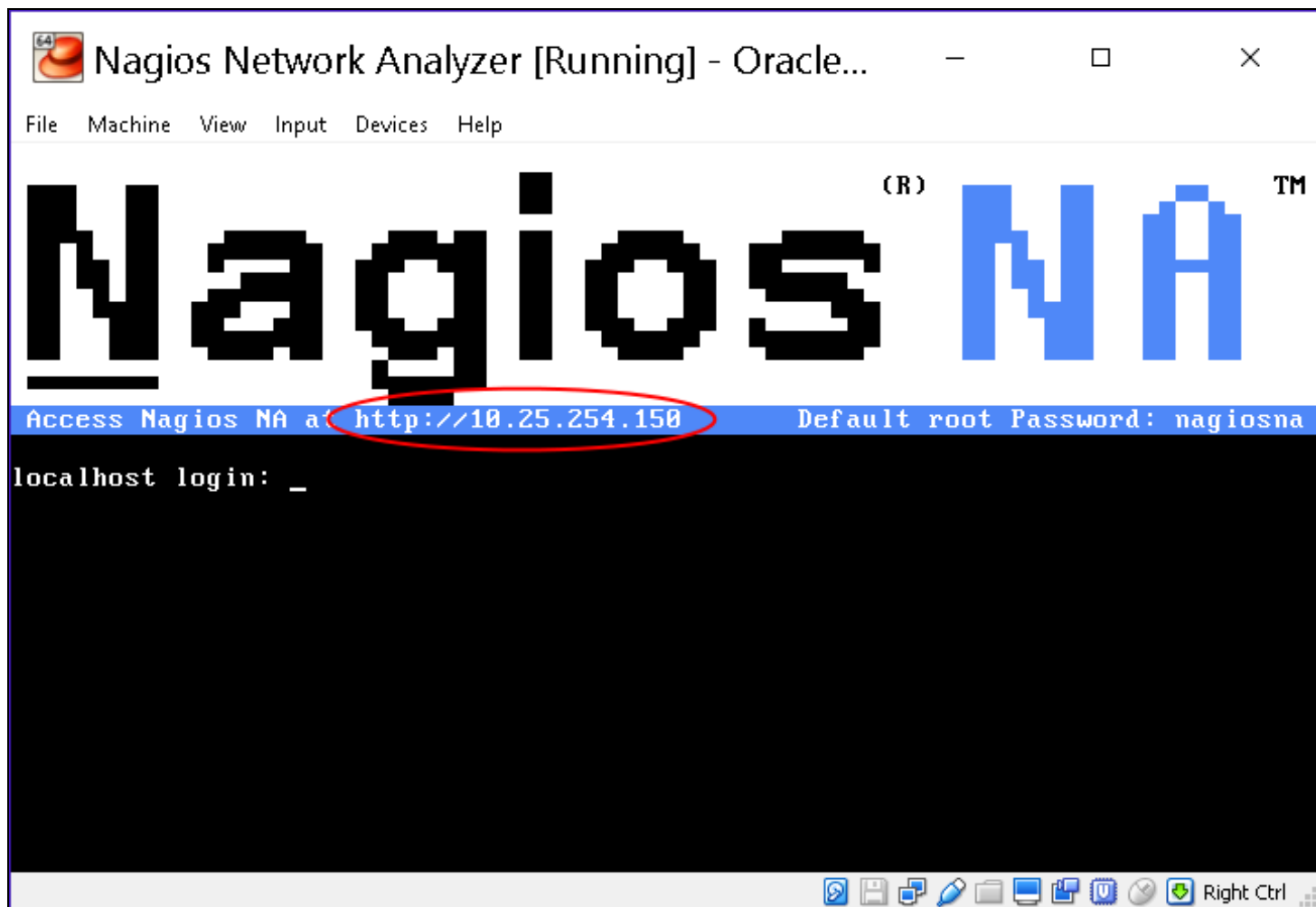


8. You need to select what network the network adapter is connected to.

In the screenshot, Bridged Adapter means it will be connected to the same network segment that the Windows machine is physically connected to.

9. Click OK to Save the changes you made.

Power On Virtual Machine



1. You are now ready to power on the VM and start using it. In VirtualBox click the Start button to power it on. A new window should open with the console of the VM and once it has booted you should see a screen like the one to the right.

2. The console provides you with a URL. Open the URL in your web browser to begin configuring Nagios Network Analyzer and start using it.

Final Installation Steps

Almost done! Update the license and configure the admin account.

License Setup

Choose a trial license, enter your key, or [get a license now](#).

☒ Free 30 Day Trial
 ☐ I already have a key

License Key:

Admin Account Setup

Choose or enter your admin profile and account settings. The default username is nagiosadmin, which you can change.

Username:*

Password:*

Confirm Password:*

Email Address:*

Language: ▼

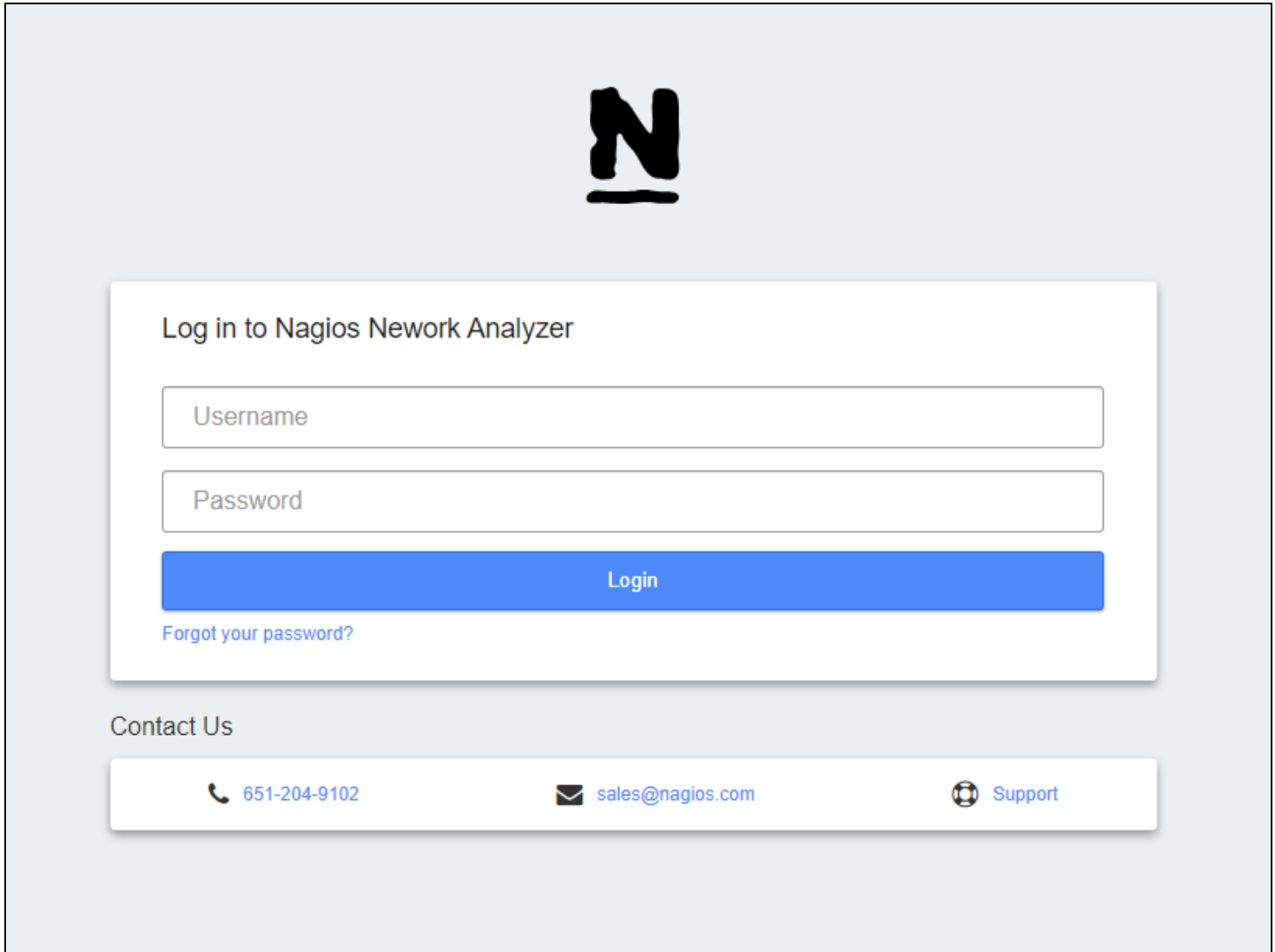
System Timezone: ▼

[Finish Installation >](#)

Configure Nagios Network Analyzer

1. When you open the URL provided on the console in your web browser, you will be shown the Installation page.
2. Here you will set your Administrator account Username, Password and email address. You also are able to add your license key if you already purchased your license.

3. Click Finish Installation to save these settings.



The image shows the Nagios Network Analyzer login interface. At the top center is the Nagios logo, a large black 'N' with a horizontal bar underneath. Below the logo is a white rectangular box containing the login form. The form has the title 'Log in to Nagios Network Analyzer' at the top. It includes two input fields: 'Username' and 'Password'. Below these fields is a blue 'Login' button. Under the 'Login' button is a link that says 'Forgot your password?'. Below the login box is a 'Contact Us' section. This section contains three items: a phone icon followed by the number '651-204-9102', an email icon followed by the address 'sales@nagios.com', and a support icon followed by the word 'Support'.

4. The Log In screen screen will be shown, it will have the status of Installation Complete. Type the username and password required to login to Nagios Network Analyzer.

5. Click the Log In button to begin.



Notice: This copy of Nagios Network

Dashboard
Sources
Source Groups
Views
Reports
Queries
Alerting

Dashboard

Pinned Sources ([View All](#))

| Status | Source Name | Traffic last 30 minutes |
|-----------------------------|-------------|-------------------------|
| No sources currently exist. | | |

Alert Summary

All (0)
Ok (0)
Warning (0)
Critical (0)

| Check Name | Status |
|------------|--------|
| No entries | |

You will be logged into Nagios Network Analyzer and be placed at the home screen.