



Purpose

This document describes how to enable and configure the NRPE Listener in NSClient++ 0.3.x for Nagios XI on a remote windows machine. The NRPE listener allows the Nagios XI server to perform more advanced and customized monitoring methods using `check_nrpe` (compared to requests using `check_nt`).

Some reasons you may want to use `check_nrpe` instead of `check_nt` are:

- The built in CPU / memory / disk checks are more flexible and customizable
- The `CheckExternalScripts` module can execute various user written script (VB / BAT / EXE / Perl / Python / PowerShell)
- Uses SSL

Target Audience

This document is intended for use by Nagios XI Administrators that want to enable NRPE in NSClient++.

Requirements

- A running Nagios XI server
- NSClient++ 0.3.x installed on the Windows Client as per this documentation:
 - [Installing The Windows Agent NSClient++ for Nagios XI](#)

Note: This document is for version **0.3.x** of NSClient++. For version **0.4.x** of NSClient++ see:

[Enabling the NRPE Listener in NSClient 0.4.x for Nagios XI](#)

The following documentation explains how the configuration file works in NSClient++ and may also be helpful:

[Configuring The Windows Agent NSClient++ for Nagios XI](#)

Edit NSClient++ Configuration File

Log onto your remote windows machine as an administrator.

The configuration file in NSClient++ 0.3.x is called `NSC.ini` and is located here:

```
C:\Program Files\NSClient++\NSC.ini
```

Open the configuration file `NSC.ini` in a text editor for editing (like Notepad).

Note: In the following steps, the setting you are asked to edit or add may already be there with a semi-colon (;) at the beginning of the line. Removing the semi-colon will enable the setting.

Under the `[modules]` section add the following lines:

```
NRPEListener.dll  
CheckExternalScripts.dll
```

Here is an example on what it should look like:

```
[modules]  
NRPEListener.dll  
NSClientListener.dll  
FileLogger.dll  
CheckSystem.dll  
CheckDisk.dll  
CheckEventLog.dll  
CheckHelpers.dll  
CheckExternalScripts.dll
```

Under the `[NRPE]` section configure the following lines:

```
allow_arguments=1  
allow_nasty_meta_chars=1
```

Under the **[External Script]** section configure the following lines:

```
allow_arguments=1
allow_nasty_meta_chars=1
```

What does `allow_arguments` and `allow_nasty_meta_chars` do?

- `allow_arguments`
 - This allows you send options in the `check_nrpe` command, it allows for flexible monitoring configurations
- `allow_nasty_meta_chars`
 - This allows the ``&><'"\[\]{}` characters to be used in the arguments

Save your changes to `NSC.ini` and close the file.

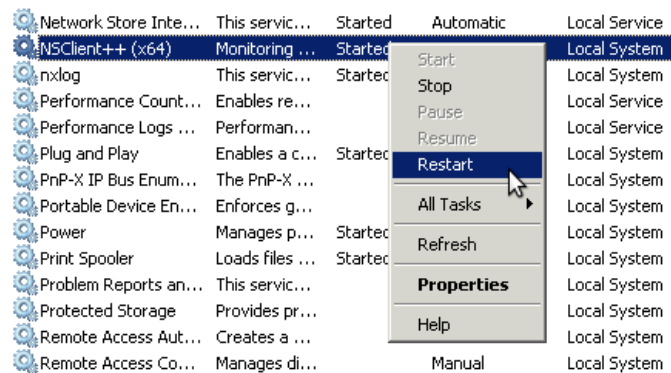
Restarting The NSClient++ Service

NSClient must now be restarted. In the Windows open the **Services** console under **Administrative Tools**. If you cannot locate this, use `services.msc` to open the Services console.

Locate the NSClient++ service.

Right click the **NSClient++** service and select **Restart**.

You can close the Services console as it's no longer required.

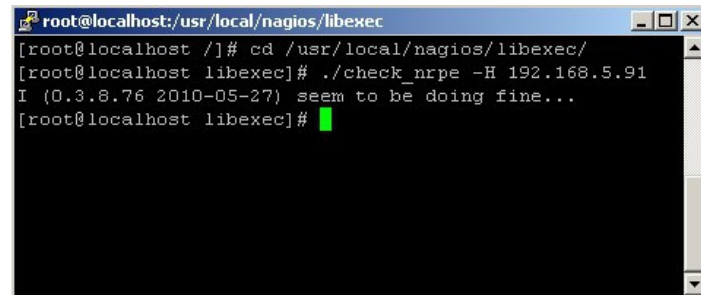


Testing On The Nagios XI Server

Log in as root to the Nagios XI Server and enter the following:

```
cd /usr/local/nagios/libexec/  
./check_nrpe -H [IP of the windows system]
```

You now should see the **I seem to be doing fine...** output, verifying the test is successful.



```
root@localhost: /usr/local/nagios/libexec  
[root@localhost ~]# cd /usr/local/nagios/libexec/  
[root@localhost libexec]# ./check_nrpe -H 192.168.5.91  
I (0.3.8.76 2010-05-27) seem to be doing fine...  
[root@localhost libexec]#
```

Additional Resources

The following documents demonstrate the different ways that NRPE can be utilized.

- [Integrating Autolt With Nagios XI](#)
- [Checking For Windows Updates With Nagios XI](#)
- [Monitoring Performance Counters in Nagios Using NSClient++](#)
- [Windows Memory Usage – Physical](#)
- [How to Restart A Windows Service With NRPE](#)
- [Using Scripts / Plugins With NSClient++](#)
- [Knowledgebase Check Library](#)

Finishing Up

This completes the documentation on enabling the NRPE listener in NSClient++ 0.3.x.

If you have additional questions or other support related questions, please visit us at our Nagios Support Forums:

<https://support.nagios.com/forum>

The Nagios Support Knowledgebase is also a great support resource:

<https://support.nagios.com/kb>