



## Purpose

This document describes how to download, install, and setup the Google Map integration component for Nagios XI.

## Deprecated – Please Read:

Google Map integration with Nagios XI is no longer supported. You can now use the World Map feature in Nagios XI to integrate geo mapping with your Nagios XI objects. Please see [Using the Nagios XI World Map](#) for more information.

## Target Audience

This document is intended for use by Nagios Administrators who wish to integrate geo mapping with their Nagios XI objects.

## Google API

To use the Google Map component you are required to have a billing account setup with Google. Don't be alarmed though, you can still access the maps for free when you have less than 25,000 page loads per day. However you do require a billing account to be created. Full details can be found at this link:

<https://developers.google.com/maps/documentation/javascript/get-api-key#key>

Once you have enabled billing you will need to navigate to the Credentials section and create an API Key credential for Google Maps JavaScript access. You will need this key after you install the component in the next step.

## Downloading and Installing

The Google Map component for Nagios XI can be obtained from Nagios Exchange at the following URL:

1295 Bandana Blvd N, St. Paul, MN 55108 [sales@nagios.com](mailto:sales@nagios.com) US: 1-888-624-4671 INTL: 1-651-204-9102

<https://exchange.nagios.org/directory/Addons/Components/Nagios-XI-Google-Map-Integration-Component/details>

Download the zip file and then navigate to **Admin > System Extensions > Manage Components**. Use the **Browse** and **Upload & Install** buttons to install the `googlemap.zip` component into Nagios XI.

Once you have installed the component, on the same page click the **Check for Updates** button.

## Add Google API Key

While on the **Manage Components** page locate the Google Map component and click the **Settings** icon.

The screenshot shows the Nagios XI Admin interface. The top navigation bar includes Home, Views, Dashboards, Reports, Configure, Tools, Help, and Admin (circled in blue). The left sidebar lists various system management options, with 'Manage Components' circled in blue. The main content area is titled 'Manage Components' and contains a table of installed components. The 'Google Map' component is listed with a 'Settings' icon circled in blue.

Component	Type	Settings	Actions	Version	Status
<b>Google Map</b> Adds a google map to the maps menu where hosts with defined coordinates can be viewed. 1.6.1 11/13/2018 Nagios Enterprises, LLC	User			1.6.1	

This will bring up the Google Map settings page. Here you can populate the **API Key** field using the key you obtained earlier.

Click the **Apply Settings** button when you have performed this step.

## Google Map

### Google Maps Settings

API Key:

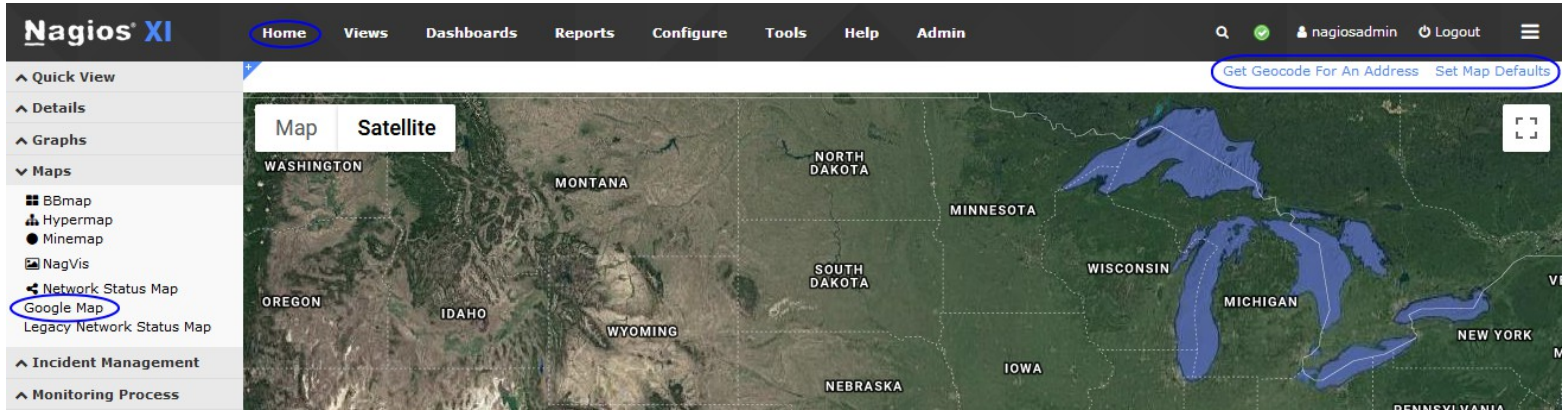
Your Google maps API key.

**Apply Settings**

Cancel

## Open Google Maps Component

Once the component is installed and the API key has been added, navigate to **Home > Maps > Google Map**.



If you are presented with a white screen, follow the steps in the next section [Setting Map Defaults](#).

## Setting Map Defaults

The default Google map will display a zoomed out image of earth. In order to set a default zoom level and location, click the **Set Map Defaults** link located on the upper right of the frame. You will need to supply:

### Center latitude and longitude co-ordinates

See the next section to get a set of co-ordinates

### Default zoom level

Numbers 7 – 20 are suggested to be used

### Refresh Rate

How often the map should refresh

### Host to Parent Line Color

You can set the color for host-parent lines using a standard color hex code. Search the internet and you'll find color hex code tools to give you the hex code for the color you require.

Please set your default coordinates and zoom level.

Default Center Coordinates: (Latitude/Longitude)

Default Zoom Level: (Recommended 7-20)

Refresh Rate: (in seconds)

Host to Parent Line Color:



## Get Geocode For An Address

The easiest way to get a valid set of latitude and longitude co-ordinates for Nagios XI is to use the **Get Geocode For An Address** link, which utilizes Google's geocoding services. This will allow you to enter a city, state, zip

Please enter an address:




1295 Bandana Blvd N, St. Paul, MN 55108 [sales@nagios.com](mailto:sales@nagios.com) US: 1-888-624-4671 INTL: 1-651-204-9102

code, or mailing address.

When you click OK it will return a valid set of latitude and longitude co-ordinates that can be used as the default map coordinates, or the host location.

Geocode results for your address:

44.9728711, -93.1546417000000

Prevent this page from creating additional dialogs

## Configure Hosts

To configure google map to display a marker bubble indicating a host's status you will need to add the latitude and longitude co-ordinates to the notes directive in the host object. Navigate to **Configure > Core Config Manager > Hosts** to bring up the **Host Management** page.

Click the host you want to **Modify** then click the **Misc Settings** tab.

Enter a valid set of latitude and longitude co-ordinates into the **Notes** field and then click **Save** when done.

Repeat these steps for any additional hosts.

### Host Management

Common Settings
✓ Check Settings
🔔 Alert Settings
Misc Settings

**Notes**

44.9728711, -93.1546417000000

**VRML image**

**Notes URL**

**Status image**

**Action URL**

**Icon image**

**Icon image 'alt' text**

**2D coords**

x,y

**3D coords**

x,y,z

Manage Free Variables ?

**Use this configuration as a template**

**Generic name**

Click **Apply Configuration** when done.



## View Map

Now that you have configured hosts with latitude and longitude co-ordinates they will appear on the Google Map.

The Google Map component will only display hosts that have valid latitude and longitude co-ordinates in the Notes directive. If other entries are made into the notes field for a host, these hosts will be ignored by this component.

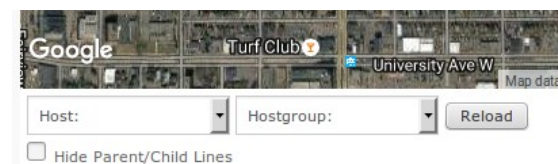
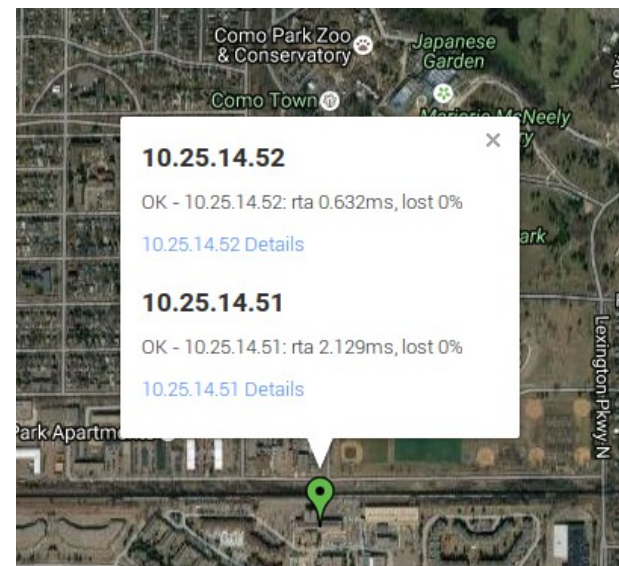
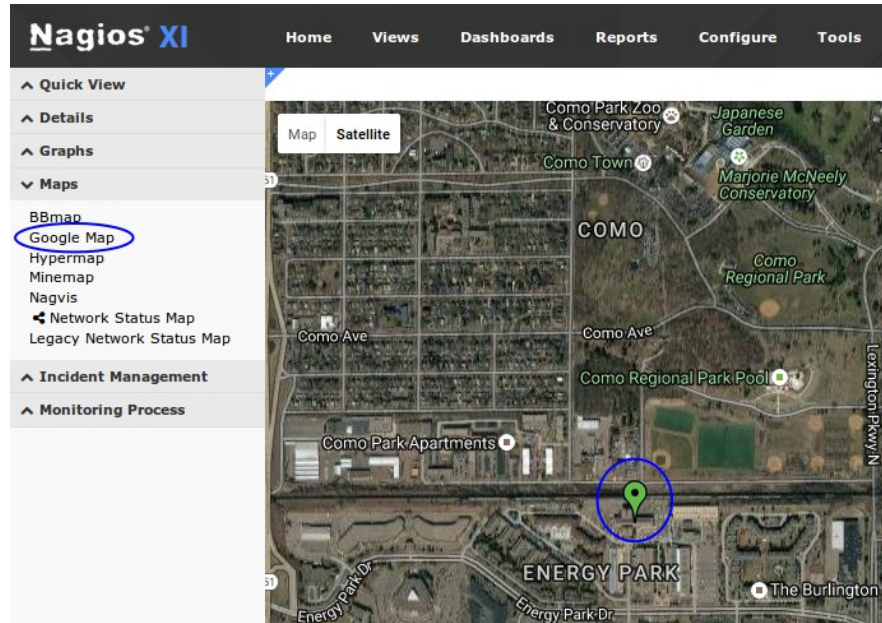
If multiple hosts have the same co-ordinates, they will appear on the map as one pin.

When you hover over the pin with the mouse, the names of the hosts at this location will be shown in a message bubble.

To view more details about these hosts, simply click on the pin.

At the bottom of the map you will also see two drop down lists, **Hosts:** and **Hostgroup:**. These options allow you to only show a specific host or all the hosts in a hostgroup on the map.

**Note:** Only hosts with configured co-ordinates will be shown in the **Host:** or **Hostgroup:** lists.



Additionally there is a check box **Hide Parent/Child Lines** at the bottom of the map.

If you have parent/child relationships defined on your host objects, lines that reflect these relationships will automatically be displayed.

If you do not want these lines displayed, check the box **Hide Parent/Child Lines** at the bottom of the map.



## Google Map Dashlet

The Google Map integration tool can also be accessed as a dashlet by downloading and installing the Google Map Nagios XI dashlet from the Nagios Exchange website.

<https://exchange.nagios.org/directory/Addons/Dashlets/Google-Map-Nagios-XI-Dashlet/details>

See the Nagios XI documentation for full instructions on installing and adding dashlets.

[Installing XI Dashlets](#)



## Troubleshooting

When you first navigate to **Home > Maps > Google Map** all you can see is a white screen.

To resolve this problem follow the steps under [Setting Map Defaults](#).

When you navigate to **Home > Maps > Google Map** you receive the message:

```
Oops! Something went wrong. This page didn't load Google Maps correctly. See the JavaScript console for technical details.
```

This problem usually occurs when the google API key has not been correctly added or it has expired. Please check the steps under [Google API](#) and [Add Google API Key](#).

## Finishing Up

This completes the documentation on how to integrate Google Maps with Nagios XI.

If you have additional questions or other support related questions, please visit us at our Nagios Support Forums:

<https://support.nagios.com/forum>

The Nagios Support Knowledgebase is also a great support resource:

<https://support.nagios.com/kb>