

# Monitoring A Nagios XI 2024 Server

## Purpose

Nagios administrators often need to ensure that their primary monitoring server is operating properly and can reach the Internet to send alert notifications via email and other methods. This document describes how to effectively monitor a primary Nagios XI server from an offsite location to ensure it is both reachable and operating properly.

## Target Audience

This document is intended for use by Nagios XI Administrators who wish to effectively monitor their Nagios XI server to ensure the monitoring system is functioning properly.

## The Problem

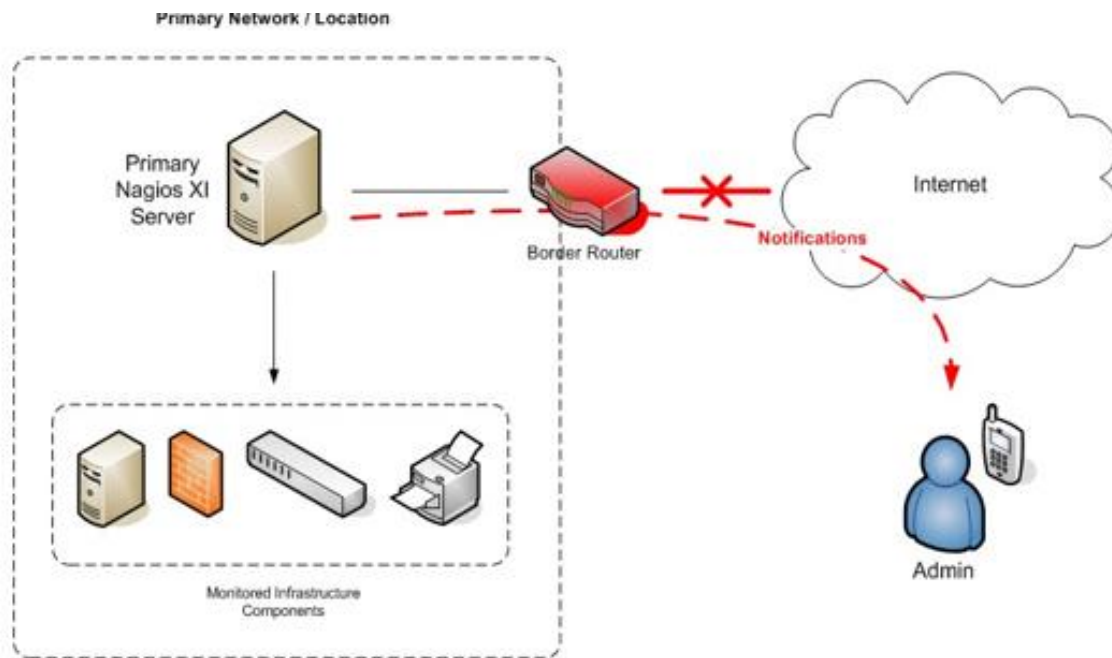
A simple and effective method of ensuring that your primary Nagios XI monitoring server is running properly and b) that you are notified immediately if your primary Nagios XI server stops running, crashes, or becomes unreachable is to monitor that server with a remote Nagios XI instance.

With this type of monitoring architecture, a second Nagios XI instance is installed at an offsite location or separate network. This off-site location can be a home office or a data center in a separate geographic location.

The off-site Nagios XI instance is configured to monitor the primary Nagios XI server. If the off-site server detects a problem with the primary server (e.g., Nagios XI stops, or the server crashes or is disconnected from the network), the off-site server can send an alert to one or more administrators. This allows an administrator to immediately begin investigating the problem and get the primary Nagios XI server back online.

It is equally important that your production instance of Nagios XI monitors the off-site server to ensure it is up and running. If the off-site server crashes or goes offline, then it is no longer going to be able to tell you when there is a problem with the production instance of Nagios XI.

# Monitoring A Nagios XI 2024 Server



## What The Off-Site Server Monitors

The off-site Nagios XI instance is configured to monitor the primary Nagios XI server. The purpose of the offset server is to focus on monitoring the primary server, so it is not configured to monitor all the individual infrastructure components that the primary server monitors. This type of setup provides a straightforward design that minimizes administrative overhead, while accomplishing what it was designed to do.

## Licensing For Your Offsite Server

Setting up an off-site Nagios XI instance to monitor your primary Nagios XI server does not usually require you to obtain a separate license. Nagios XI is licensed for free usage if you monitor seven (7) nodes or less. This allows you to set up an off-site Nagios XI instance to monitor your primary instance without having to purchase an additional license.

# Monitoring A Nagios XI 2024 Server

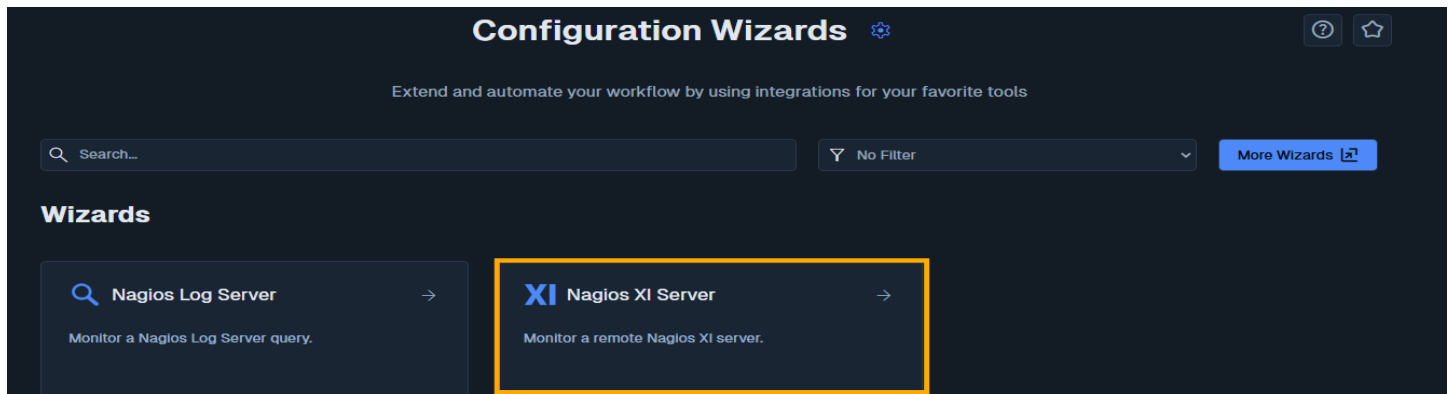
## Server Monitoring Wizard

There is a special configuration wizard called "Nagios XI Server" to simplify the process of monitoring a remote Nagios XI server. If for some reason you cannot find the wizard on your Nagios XI server, it can be downloaded using this link: [nagiosxiserver.zip](https://nagiosxiserver.zip)

You can upload and install the configuration wizard by navigating to **Admin > System Extensions > Manage Config Wizards**.

## Configuring Monitoring

To begin using the Nagios XI Server wizard navigate via the top menu bar to **Configure > Configuration Wizards** and select the **Nagios XI Server** wizard.




On **Step 1** you will be asked to supply the **Address** and **URL** of the primary Nagios XI server. If you are using Nagios XI less than 5.5, you will also have to supply the **credentials** used to login to the primary Nagios XI server's web interface.

**Note:** You do not need to use the `nagiosadmin` account, you can create a separate Nagios XI account if required.

# Monitoring A Nagios XI 2024 Server

If you are using more modern versions of Nagios XI, you will enter the **API Key** of the Nagios XI server. Click **Next** to progress to **Step 2**.

**XI Nagios XI Server Configuration Wizard** Step 1 

**Nagios XI Server**

Specify the details for the remote Nagios XI server you want to monitor

\* Address ⓘ

Enter Address

\* URL ⓘ

Enter URL, e.g., http://192.168.1.1/nagiosxi/

**Authentication Settings**

An admin user's API key for the Nagios XI server is required.

☐ Legacy Nagios XI authentication ⓘ

\* API Key ⓘ

Enter API Key

Next >

# Monitoring A Nagios XI 2024 Server

On **Step 2** you need to provide a **Host Name** and **Address** for this server. The monitoring wizard will present you with various monitoring options, or **metrics**. It's recommended to select all the options.

**XI Nagios XI Server Configuration Wizard** Step 2

**Nagios XI Server**

Address  
192.168.0.53

Host Name ⓘ  
192.168.0.53

URL  
https://192.168.0.53/nagiosxi

**Nagios XI Server Metrics**

Specify the metrics you would like to monitor on the remote Nagios server








- ☒ Ping ⓘ
- ☒ Nagios XI Web Interface ⓘ
- ☒ Monitoring Daemons ⓘ
- ☒ Monitoring Jobs ⓘ
- ☒ Load ⓘ  
Warning: 5,4,4 Critical: 10,10,7
- ☒ I/O Wait ⓘ  
Warning: 5 % Critical: 5 %

< Back Next >

Click **Next** and then complete the wizard by choosing the required options in **Step 3 – Step 5**. To finish, click on **Finish** in the last step of the wizard. This will create new **hosts** and **services** and begin monitoring.

# Monitoring A Nagios XI 2024 Server

Once the wizard applies the configuration, click the **View status details** for your Nagios XI server link to see the new host and services that were created. Here you can see the new server is being monitored and appears **OK**.

Host ↓	Service ↕	Status ↕	Duration ↕	Attempt ↕	Last Check ↕	Status Information ↕
● 192.168.0.124	 HTTP	 ● Ok	 ⌚ N/A	1/5	2024-11-29 14:22:40	HTTP OK: HTTP/1.1 200 OK - 2939 bytes in 0.008 second response time
	I/O Wait	 ● Ok	 ⌚ N/A	1/5	2024-11-29 14:22:51	Ok: I/O Wait = 0.51%
	Load	 ● Ok	 ⌚ N/A	1/5	2024-11-29 14:23:01	Load Ok: load1=1.43, load5=1.49, load15=1.37
	Nagios XI Daemons	● Ok	 ⌚ N/A	1/5	2024-11-29 14:23:12	All daemons are running okay.
	Nagios XI Jobs	● Ok	 ⌚ N/A	1/5	2024-11-29 14:23:23	All jobs are running okay.
	Ping	 ● Ok	 ⌚ N/A	1/5	2024-11-29 14:23:34	OK - 192.168.0.124: rta 0.425ms lost 0%
Last Updated: 2024-11-29 14:25:04						Page 1 / 1 15 Per Page Go

## More Information:

[How To Use And Configure Wizards In Nagios XI 2024](#)

## Finishing Up

This completes the documentation on monitoring a Nagios XI 2024 Server. If you have additional questions or other support-related questions, please visit us at our Nagios Support Forum, Nagios Knowledge Base, or Nagios Library:

[Visit Nagios Support Forum](#)

[Visit Nagios Knowledge Base](#)

[Visit Nagios Library](#)