

# How To Use the WatchGuard Wizard in Nagios XI

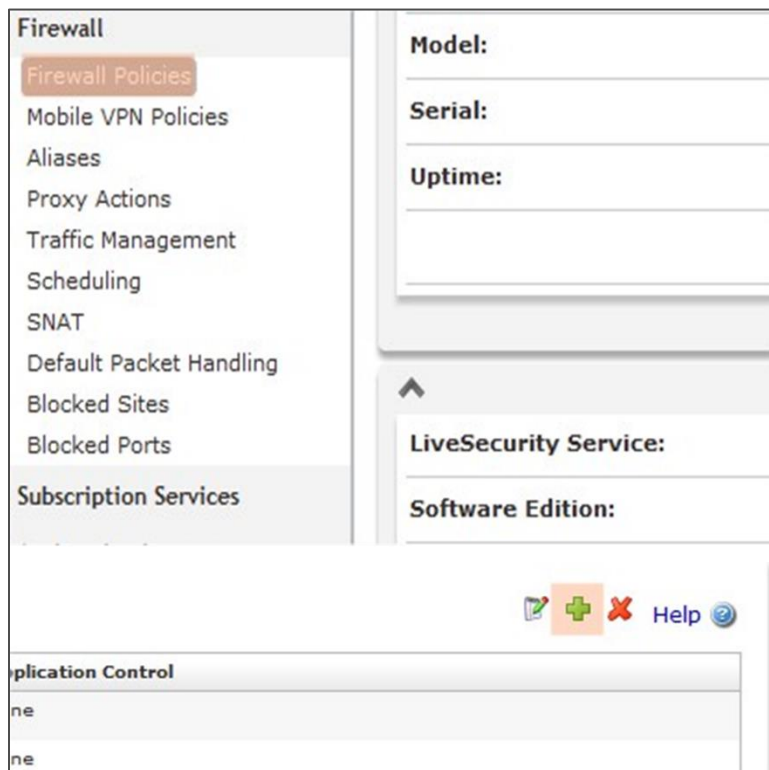
## Purpose

This document describes how to set up your WatchGuard device and your Nagios XI server to allow for quick and easy monitoring of your WatchGuard device.

## Configure WatchGuard Device

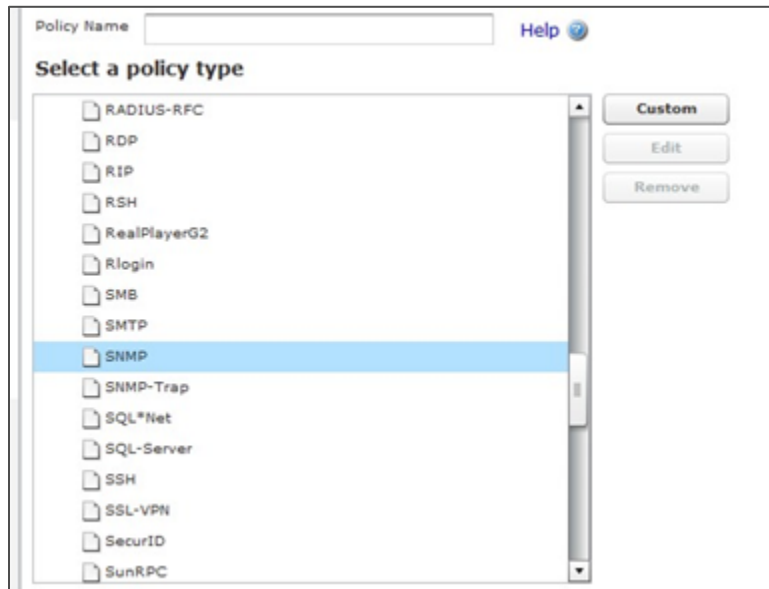
The first task that must be accomplished is the configuration of your WatchGuard device. The WatchGuard wizard utilizes SNMP to monitor the device so first we must enable SNMP on the WatchGuard device.

1. Login to your WatchGuard device's web interface with admin privileges. If already have the WatchGuard device configured for SNMP feel free to skip this section.
2. Select the **Firewall Policies** from the Firewall menu.
3. Select the green **add** button



# How To Use the WatchGuard Wizard in Nagios XI

- Under the **Packet Filters** folder find **SNMP** and select it. Once selected click the **Add Policy** button at the bottom.



- Once at the next screen, you'll need to tell the WatchGuard which interface it can trust SNMP traffic on. For this example we switch the To: field to be only the Firebox. This way only the WatchGuard device can receive SNMP traffic.
- Once configured be sure to click **Save**.



# How To Use the WatchGuard Wizard in Nagios XI

7. Once you've save that, navigate to the **SNMP** link under the **System** left menu header.
8. Once clicked, it will bring you to the SNMP configuration screen.
9. Specify your **Community String**.
10. Set the **SNMP Management Station** to that of your Nagios XI server by entering the IP of your Nagios XI server in the text field next to the add button and clicking **Add**.
11. Once satisfied with the input, click **Save**. You have now finished the WatchGuard configuration.

The screenshot shows the 'SNMP Settings' configuration page in Nagios XI. The 'Version' is set to 'v1/v2c'. The 'Community String' is 'private'. The 'Authentication Protocol' is 'MD5' and the 'Privacy Protocol' is 'None'. The 'SNMP TRAPS' section shows 'Version' set to 'v1Trap'. The 'SNMP Management Stations' table lists two IP addresses: '192.168.5.74' and '192.168.5.190', with the latter selected. At the bottom are 'Add', 'Remove', 'Save', and 'Reset' buttons.

SNMP Settings	
Version	v1/v2c
Community String	private
User Name	
Authentication Protocol	MD5
Privacy Protocol	None
Password	
Confirm	
Password	
Confirm	

SNMP TRAPS	
Version	v1Trap

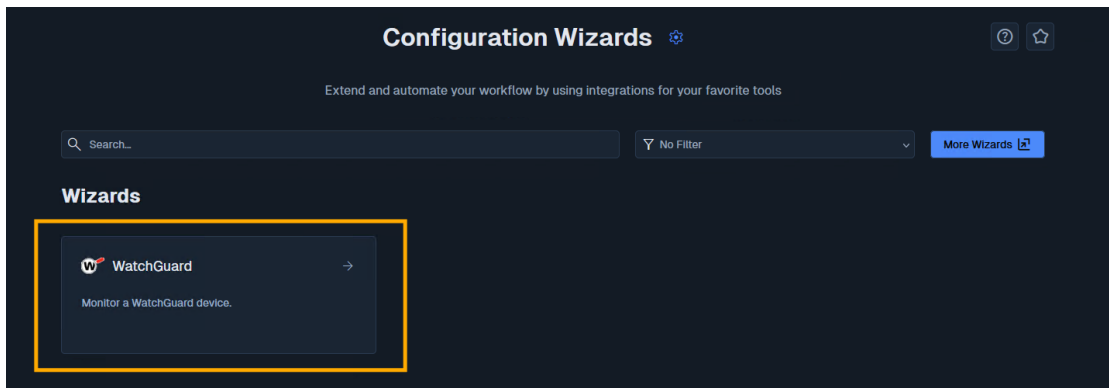
SNMP Management Stations	
IP Address	
192.168.5.74	
192.168.5.190	

Buttons: Add, Remove, Save, Reset

# How To Use the WatchGuard Wizard in Nagios XI

## Running The Configuration Wizard

Nagios XI comes equipped with a Configuration Wizard for WatchGuard devices.



1. To begin using the WatchGuard wizard navigate via the top menu bar to **Configure > Run a configuration wizard** and select the WatchGuard wizard. In the following screenshot you can see how the search field allows you to quickly find a wizard.
2. On **Step 1** you will be asked to supply the address of the WatchGuard device you want to monitor.
3. You will have to provide the appropriate SNMP Settings.
4. There are some additional options for port monitoring which can be defined as required.
5. Click **Next** to proceed to Step 2.

**WatchGuard Configuration Wizard** Step 1

**WatchGuard Information**

- \* IP Address
- \* Port
- SNMPv1 **SNMPv2c** SNMPv3
- \* SNMP Community

**Monitoring Options**

Monitoring Scheme

☒ Scan Interfaces

**Value Defaults**

Input Rate	<input type="text" value="50"/> %	<input type="text" value="80"/> %
Output Rate	<input type="text" value="50"/> %	<input type="text" value="80"/> %
* Default Port Speed	<input type="text" value="100000000"/> %	

**Next >**

# How To Use the WatchGuard Wizard in Nagios XI

6. On **Step 2** of the Wizard, you need to provide a Host Name.

**WatchGuard Configuration Wizard** Step 2

### WatchGuard device Details

WatchGuard Address

Host Name ⓘ

Under the **Services** section you are provided with a list of the different monitoring metrics available for a WatchGuard device

**Services**

Specify which services to monitor for the WatchGuard device.

- ☒ Ping ⓘ
- ☒ CPU Usage ⓘ
- ☒ Active Connections ⓘ
- ☒ Total Sent Packets ⓘ
- ☒ Total Received Packets ⓘ
- ☒ Stream Requests ⓘ
- ☒ Stream Requests Dropped ⓘ
- ☒ Total Bytes Sent ⓘ
- ☒ Total Received Bytes ⓘ

⚠ 20 %	❌ 40 %
⚠ 300 %	❌ 500 %
⚠ 1000 %	❌ 2000 %
⚠ 1000 %	❌ 2000 %
⚠ 300 %	❌ 500 %
⚠ 300 %	❌ 500 %
⚠ 1000 %	❌ 2000 %
⚠ 1000 %	❌ 2000 %

# How To Use the WatchGuard Wizard in Nagios XI

7. If you do not want to monitor a specific metric, simply un-check the box for that option.
8. More options continued to the next page.
9. At the bottom of the screen is the **Bandwidth** and **Port Status** section. Here is where you can specify which ports you would like to monitor, what the warning/critical thresholds are.
10. The **Port** column allows you to de-select any ports that aren't being used on the WatchGuard device.
11. You can rename each port to be more descriptive than the default **Port x**.
12. If you are not concerned with bandwidth monitoring, you can un-check the box for that port in the Bandwidth column. In this column you also define the warning and critical thresholds for the in/out rate.
13. If you are not concerned with the port status (Administratively Down/Up/Down) you can un-check the box for that port in the Port Status column.
14. Once you've finished selecting all the items you wish to monitor click **Next** and then complete the wizard by choosing the required options in **Step 3 – Step 5**.

# How To Use the WatchGuard Wizard in Nagios XI

15. To finish up, click on **Finish** in the final step of the wizard. This will create the new hosts and services and begin monitoring.

**Bandwidth and Port Status**

Select the ports for which you'd like to monitor bandwidth and port status. You may specify an optional port name to be associated with specific ports.

Port	Port Name	Port Description	Port Alias	Max Speed	Service Description	Bandwidth
<input checked="" type="checkbox"/> Port 1	No Name 47	Port-1-Gigabit—Level	Port-1-Gigabit—Level	100 Gbps	Port 1	<input checked="" type="checkbox"/> Rate In Rate Out Rate In Rate Out 500  500  800  800 Mbps
<input checked="" type="checkbox"/> Port 2	No Name 2	Port-2-Gigabit—Level	Port-2-Gigabit—Level	100.00 Mbps	Port 2	<input checked="" type="checkbox"/> Rate In Rate Out Rate In Rate Out 50  50  80  80 Mbps
<input checked="" type="checkbox"/> Port 3	No Name 4	Port-3-Gigabit—Level	Port-3-Gigabit—Level	100.00 Mbps	Port 3	<input checked="" type="checkbox"/> Rate In Rate Out Rate In Rate Out 50  50  80  80 Mbps
<input checked="" type="checkbox"/> Port 4	No Name 6	Port-4-Gigabit—Level	Port-4-Gigabit—Level	100.00 Mbps	Port 4	<input checked="" type="checkbox"/> Rate In Rate Out Rate In Rate Out 50  50  80  80 Mbps
<input checked="" type="checkbox"/> Port 5	No Name 8	Port-5-Gigabit—Level	Port-5-Gigabit—Level	100.00 Mbps	Port 5	<input checked="" type="checkbox"/> Rate In Rate Out Rate In Rate Out 50  50  80  80 Mbps

Once the wizard applies the configuration, click the **View status details for your WatchGuard device** link to see the new host and services that were created.

## Finishing Up

This completes the documentation on using the WatchGuard configuration wizard in Nagios XI. If you have additional questions or other support-related questions, please visit us at our Nagios Support Forum, Nagios Knowledge Base, or Nagios Library:

[Visit Nagios Support Forum](#)

[Visit Nagios Knowledge Base](#)

[Visit Nagios Library](#)